



European Union
European Regional
Development Fund

Sustainable development of the Danube river cross border region

Zoltán Bara

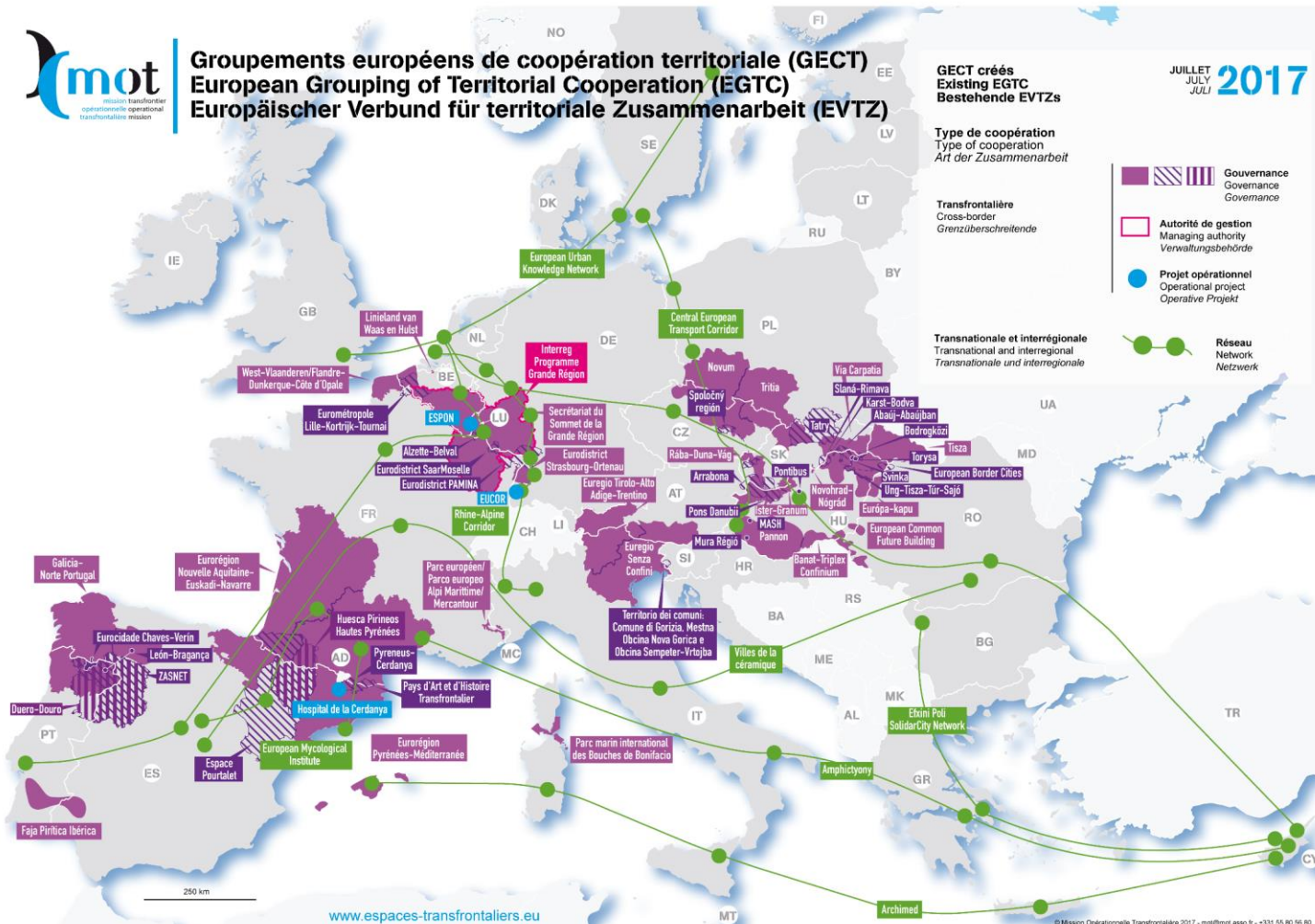
Director of Pons Danubii EGTC

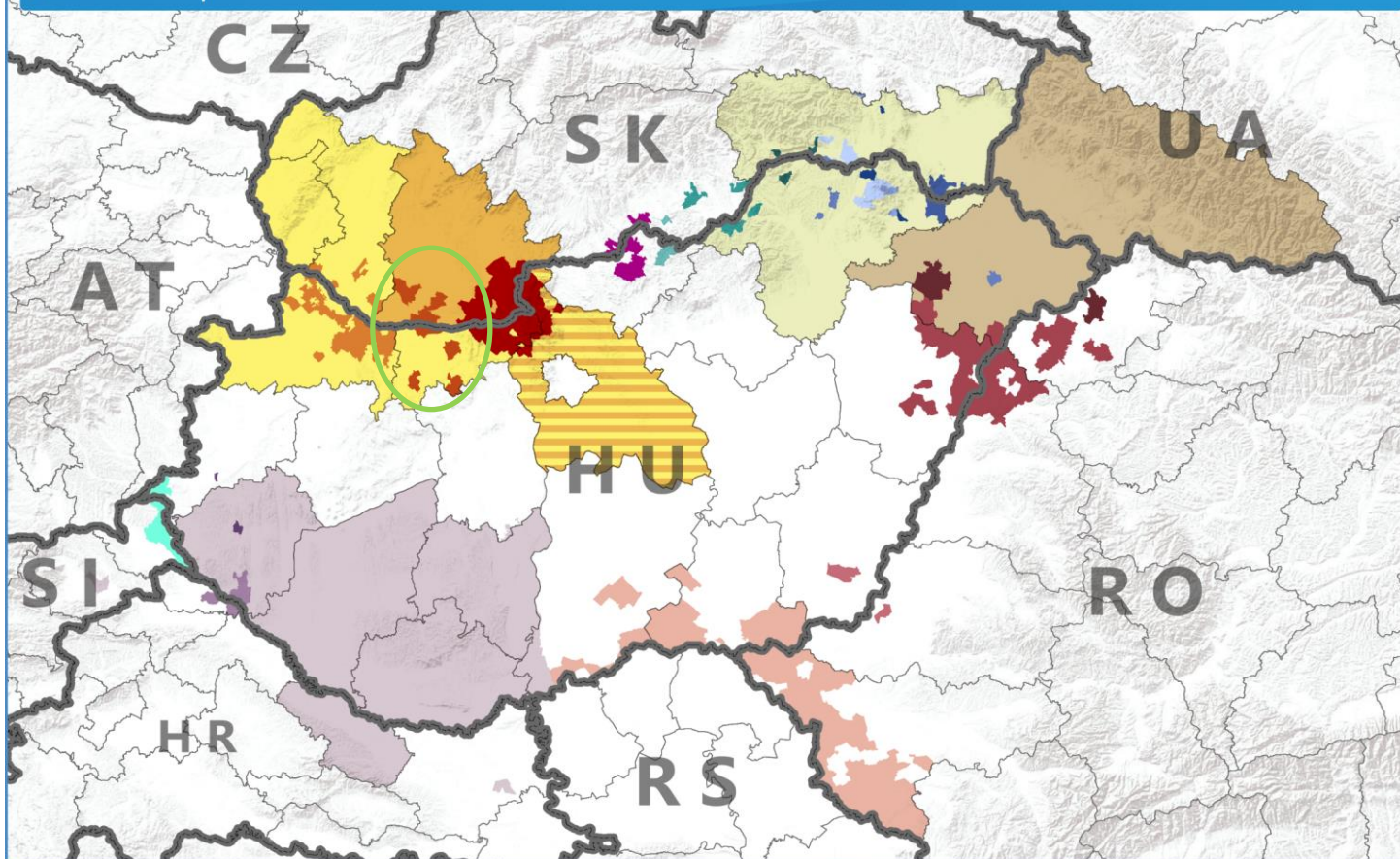
director@ponsdanubii.eu

8 October, 2020 | Final conference of project SWARE

PONS DANUBII

European Grouping for Territorial Cooperation



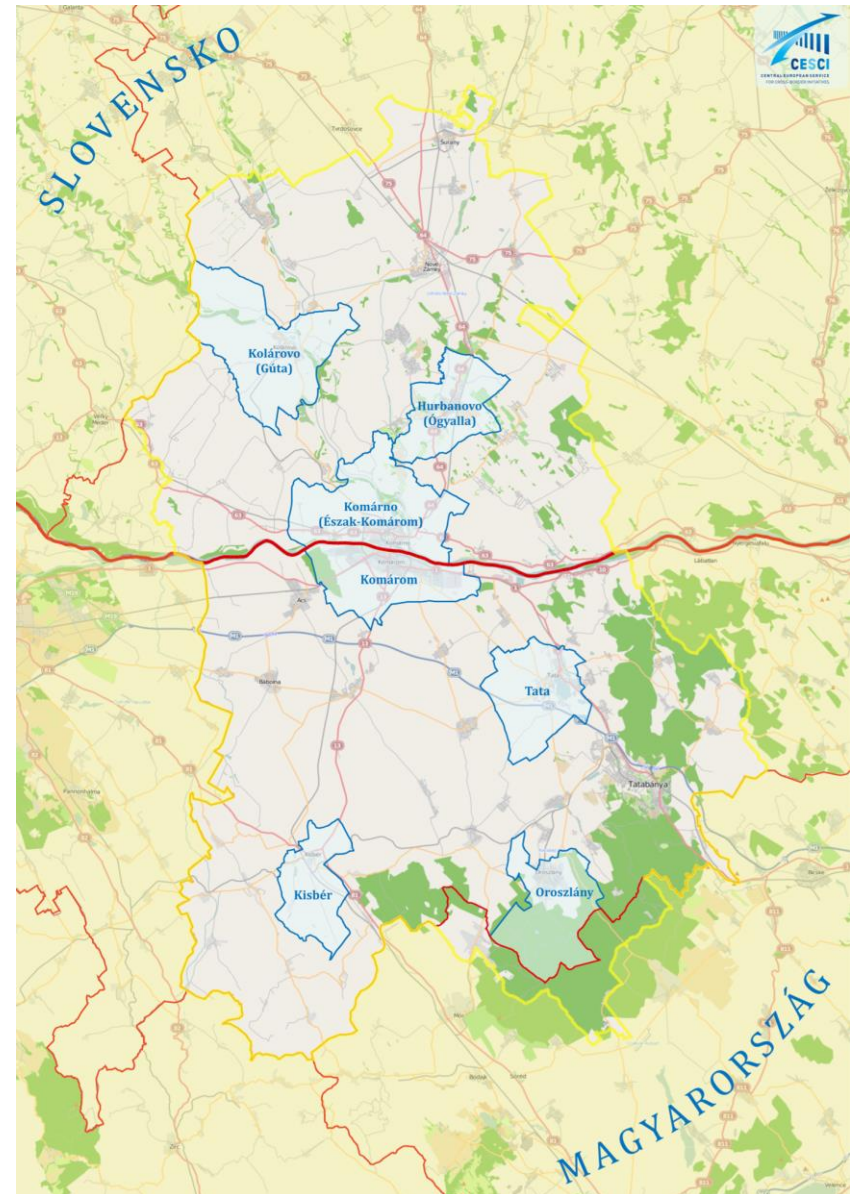


- | | | |
|------------------------------|--------------------------------|------------------------|
| ABAÚJ-ABAÚJBAN ETT | MASH ETT | Tisza ETT |
| Arrabona ETT | Mura Régió ETT | Torysa ETT |
| Bánát-Triplex Confinium ETT | Novohrad – Nógrád ETT | Ung-Tisza-Túr-Sajó ETT |
| BODROGKÖZI ETT | Pannon ETT | Via Carpatia ETT |
| Európai Határvárosok ETT | Pons-Danubii ETT | Ipöly-völgye ETT |
| Európai Közös Jövő Építő ETT | PONTIBUS ETT | MURABA ETT |
| Európa-kapu ETT | Rába-Duna-Vág ETT | |
| Ister-Granum ETT | Sajó - Rima/Slaná - Rimava ETT | |
| Karszt-Bódva ETT | Svinka ETT | |

0 20 40 80 120 160 Km

Territory of the EGTC

Komárno:	34 349 inh.
Kolárovo:	10 696 inh.
Hurbanovo:	7 751 inh.
Tata:	23 613 inh.
Komárom:	18 597 inh.
Oroszlány:	18 068 inh.
Kisbér:	5 348 inh.





OUR PROJECTS

INSIGHTS

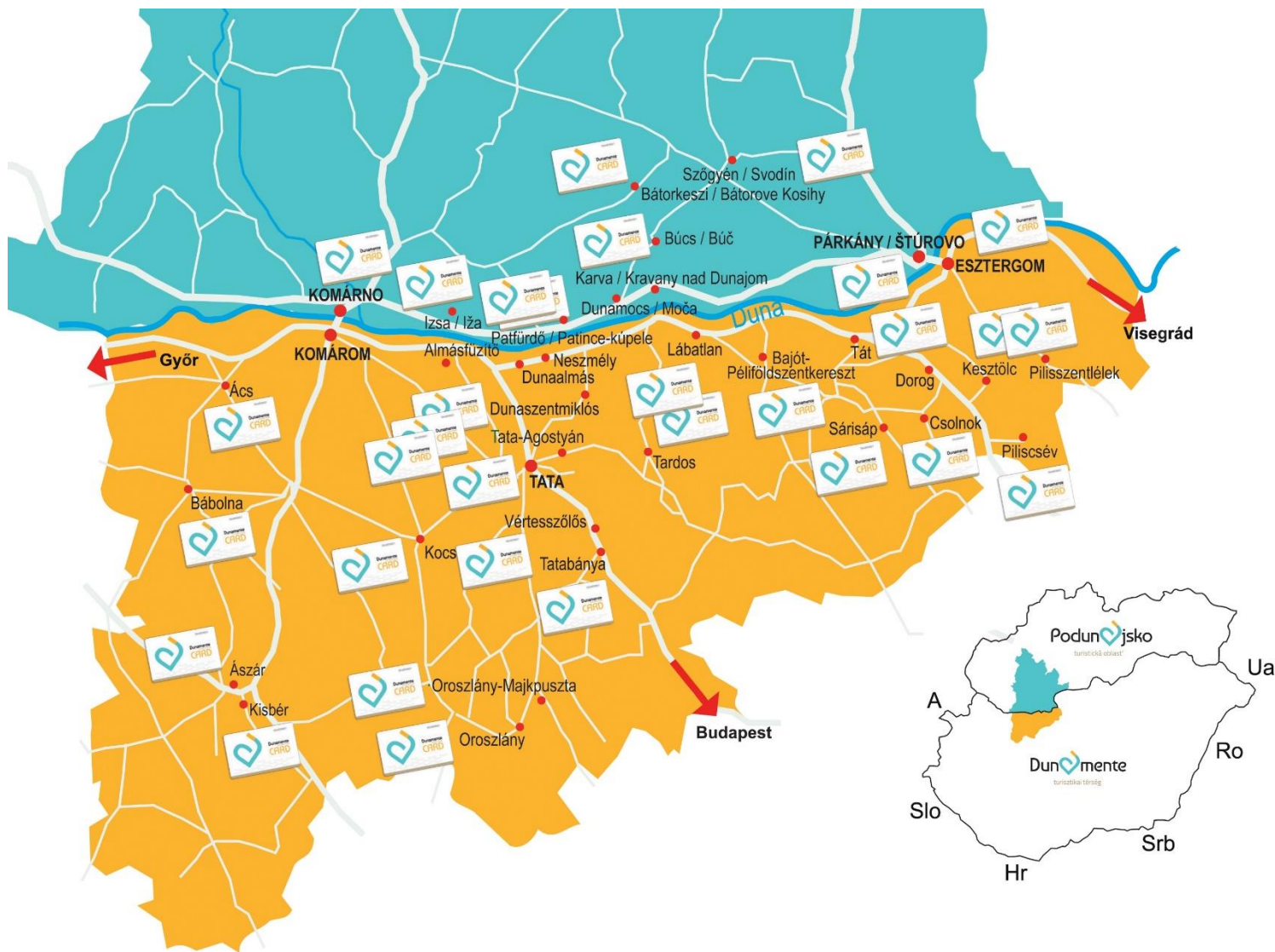
INTEGRATED SLOW, GREEN AND HEALTHY TOURISM STRATEGIES

- Danube Transnational Programme
- Lead partner: Pons Danubii, 14 partners from Germany to Bulgaria
- Budget: 2 308 170,55 EUR
- <http://www.interreg-danube.eu/approved-projects/insights>

INSIGHTS

INTEGRATED SLOW, GREEN AND HEALTHY TOURISM STRATEGIES

- Dunamente / Podunajsko Touristic card
- Cross/border touristic card in Slovakia and Hungary in the Danube area
- Starting date: May 1st 2019









CULTPLAY

INNOVATIVE USE OF CULTURAL HERITAGE

- SKHU Interreg V-A Slovakia - Hungary CBC
- 10 partners from Slovakia and Hungary
- 9 thematic parks developed and built
- Budget: 2 901 000 EUR
- <http://www.cultplay.eu>

Castle of Tata (HU)

Original



Thematic park (visualisation)



Cultplay park in Kolárovo (SK)



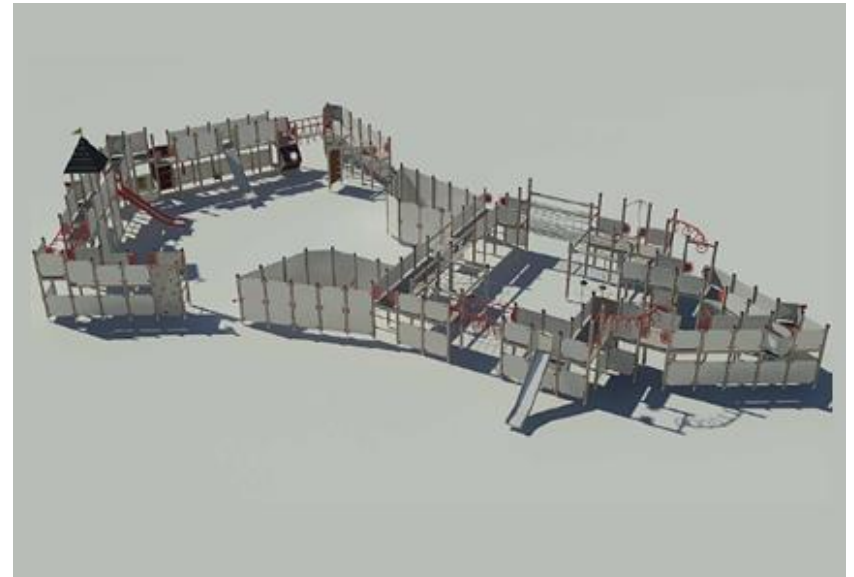
Source: Photo of vice mayor of Kolárovo

New & Old Castle of Komárno (SK)

Original



Thematic park (visualisation)



Cultplay park in Komárom (HU)



Source: Photo of Pons Danubii

Majk hermitage of Oroszlány (HU)

Original



Thematic park (visualisation)



Cultplay park in Šaľa (SK)



Source: Photo of Pons Danubii

Mining museum of Oroszlány (HU)

Original



Thematic park (visualisation)



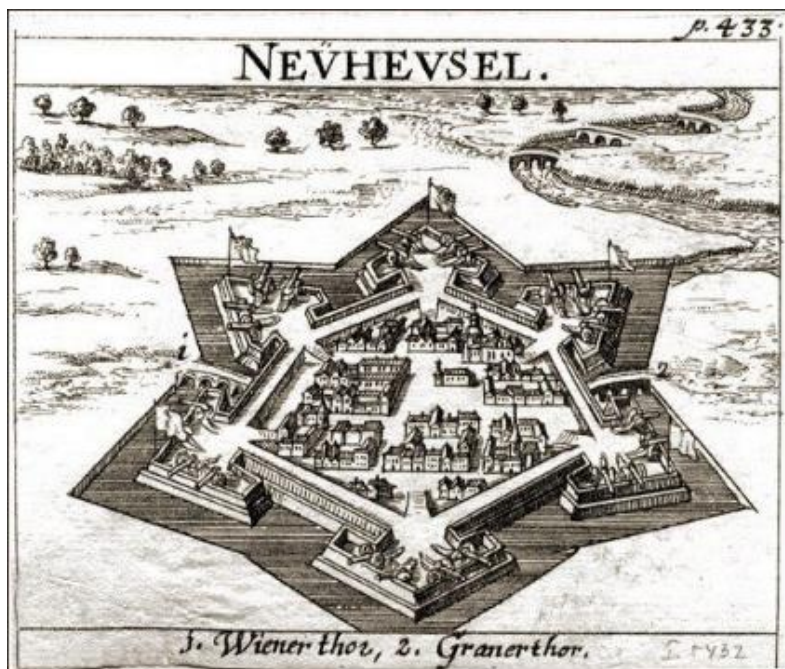
Cultplay park in Hurbanovo (SK)



Source: Photo of Pons Danubii

Castle of Nové Zámky (SK)

Original



Thematic park
(visualisation)



Cultplay park in Nové Zámky (SK)



Source: Photo of vice mayor of Kolárovo

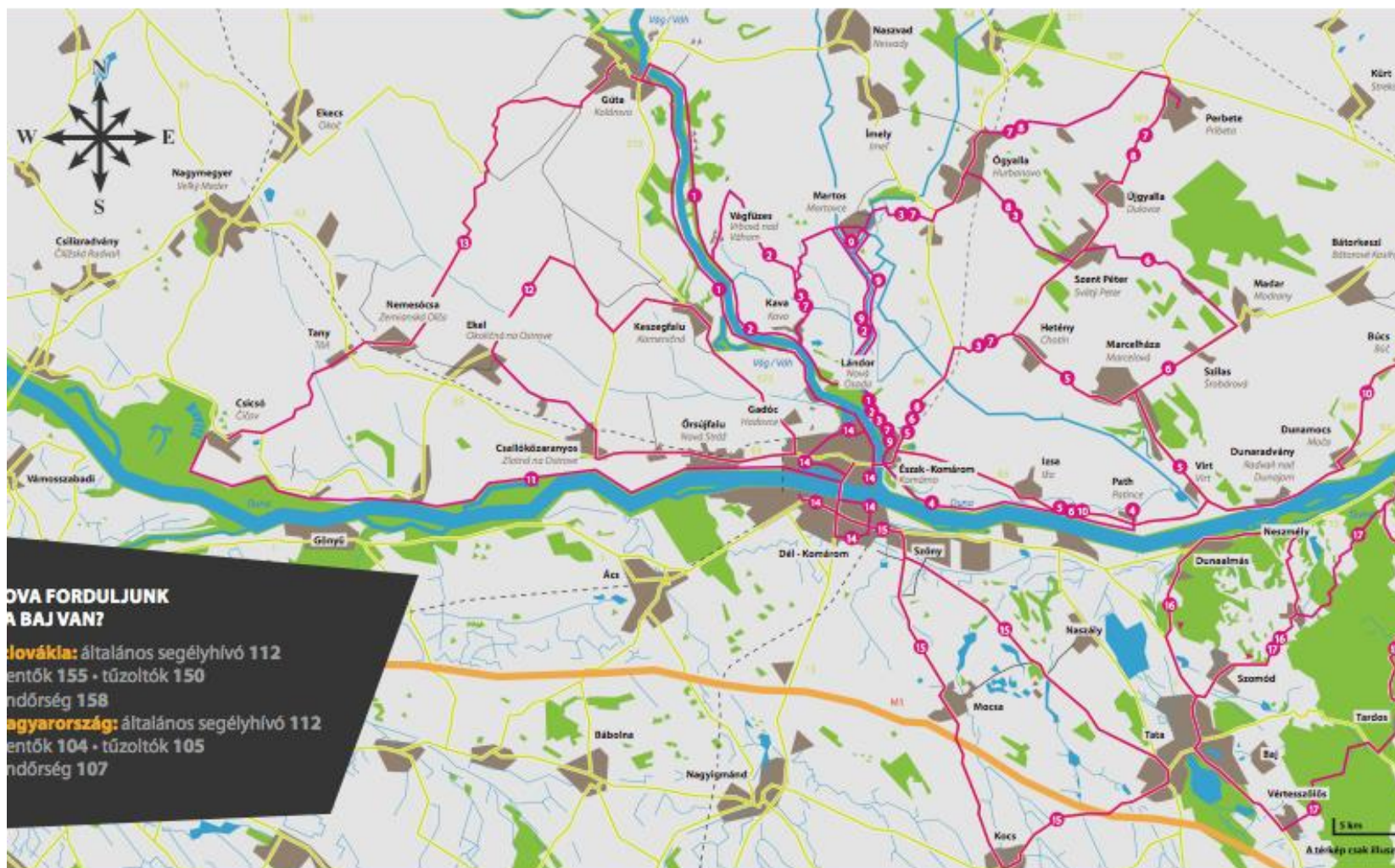
Star Fortress of Komárom (HU)

Original



Thematic park (visualisation)





SZERVIZEK:

Észak-Komárom: piko-bike, Meštianská 3018
tel: +421 35 773 13 90, www.piko-bike.sk

Gúta: Cyklo Kögler, Hlavná 32
tel: +421 905 643 575, kogler.z@zoznam.sk

Tata: Narancs bike, Ady Endre u. 49-51
tel: +36 305 364 164

KOMBI

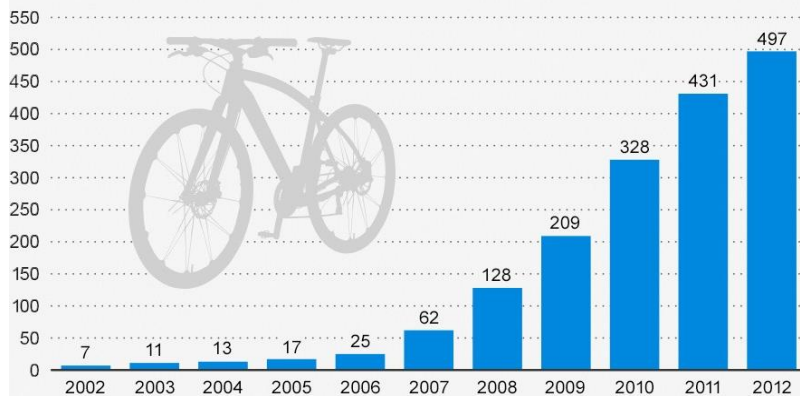
CROSS-BORDER BIKE SHARING SYSTEM

- SKHU Interreg V-A Slovakia - Hungary CBC
- 9 towns from Slovakia and Hungary
- 150 bikes (100 classic, 50 peddles)
- 13 bike sharing points
- Budget: 1 000 000 EUR

Bike Sharing Takes Off

Yearly growth of bike sharing services worldwide

Number of bike sharing services worldwide



Development of bike sharing services per continent





Source: Photo of Ister-Granum EGTC



European Union
European Regional
Development Fund

Thank you for your attention!

WWW.PONSDANUBII.EU

Questions welcome!



SWARE in social media